

Building Community Resiliency: The Role of University Leadership

15th Annual Conference
October 11–13, 2009
Loews Philadelphia Hotel

Hosted by
Widener University




CUMU Coalition of Urban and
Metropolitan Universities
Because Place Matters

Welcome to the CUMU Conference



Dear Colleagues,

Widener University is proud to welcome you to Philadelphia for the 15th Annual CUMU Conference. I am excited by the theme of this year's conference "Building Community Resiliency: The Role of University Leadership," and based on the quality of the presentations submitted, other CUMU members are excited also.

As metropolitan colleges and universities, we are leaders in responding to the hardships that inevitably impact our communities. From natural disasters and economic recessions to acts of violence and the long-term effects of poverty, our colleges and universities are among the first to provide assistance to those in need. However, as leaders at our universities, it is our responsibility to take a proactive approach to resiliency—working to build it into the foundation of our communities in ways that help prevent hardship or lessen the impact of disaster when it does occur.

The 2009 conference offers more than 100 presentations—poster sessions, panel discussions, paper presentations, student presentations, roundtables, and featured speakers—focused on the conference theme. What our CUMU member institutions are doing to build resiliency into their communities is truly impressive. Their examples are certain to provide inspiration for ideas to incorporate into your institution's resiliency plan.

As conference hosts, we invite you to join us on Sunday from 2 to 5 p.m. for a tour of Widener University and the city of Chester, which will help "set the stage" for the entire conference. On Sunday evening, Philadelphia Mayor Michael A. Nutter will personally welcome you to Philadelphia at the opening reception at the Loews Philadelphia Hotel, after which you are invited to enjoy dinner at one of the city's many fine restaurants. On Monday night, experience two Philadelphia institutions—Benjamin Franklin and Philadelphia Mural Arts Program Executive Director Jane Golden—during a reception at the Franklin Institute Science Museum. After the reception, you can join us at the Philadelphia Speakers Series, or—if you are a student—take a tour of Center City Philadelphia.

Throughout the conference, please take time to visit our sponsors in the exhibit hall in the Regency Ballroom on the second floor mezzanine of the hotel. Their generous support has helped make this conference possible.

Sincerely,

James T. Harris III
President
Widener University

Contents



Conference at a Glance1	CUMU Sponsors.....8
Conference Events2	Program Agenda9
Keynote Presenters.....3	Conference Information21
About CUMU5	Conference Planning Committee21
CUMU Members5	About Philadelphia21
CUMU Executive Committee.....6	Hotel Floor Plan.....22
About Widener University6	Speaker Index23
CUMU Partners7	

About the Cover:

Helping Hands mural is located at 802 N. 15th Street, Philadelphia. Helping Hands©1998 City of Philadelphia Mural Arts Program/ Robert Bullock. Photo by Jack Ramsdale. Reprinted by permission.

Hosted by



Widener University

Conference at a Glance

	Sunday, October 11	Monday, October 12	Tuesday, October 13
MORNING	Conference Registration opens at 10:00	Conference Registration opens at 7:00 Cyber Café opens at 7:00 7:30–9:30 Welcome Breakfast & Executive Leadership Panel 8:00 Exhibit Hall opens 9:50–11:00 Concurrent Sessions I 11:15–12:00 Presidential Address with Nancy Zimpher and Steven Diner Open to all conference attendees 11:20–12:20 Poster Sessions	Conference Registration opens at 7:00 Cyber Café opens at 7:00 7:00–8:30 Breakfast Roundtables 8:00 Exhibit Hall opens 8:50–10:00 Concurrent Sessions IV 10:30–11:40 Concurrent Sessions V 12:00 Exhibit Hall closes
LUNCH	11:00–2:00 Provosts' and Deans' Lunch/Session 11:00–2:00 Executive Committee Lunch/Meeting	12:00–12:30 CUMU Presidents Annual Meeting CUMU member presidents only 12:30–1:40 Luncheon/Keynote with Jean-Michel Cousteau and Lynton Award presentation	12:00–1:30 Lunch/Keynote
AFTERNOON	2:00 Bus leaves for Widener University and Chester tour (limited to 44) 5:00 Bus returns from Widener University and Chester tour	1:50–3:00 Lynton Award winner session 1:50–3:00 Concurrent Sessions II 3:20–4:30 Concurrent Sessions III 3:20–4:30 Programs and Policy Committee Session	1:30 Philadelphia Mural Arts tour
EVENING	5:00–6:00 Cumu Committee Meetings 5:00–7:00 Exhibit Hall open 5:30–7:00 Opening Reception at Loews Hotel 6:30 Executive Committee Dinner Conference Registration closes at 7:00 7:00 Dinner on own	Cyber Café closes at 5:00 pm 5:30–7:30 Reception at the Franklin Institute featuring Jane Golden Conference Registration closes at 6:00 8:00–10:00 Tour of the City for Student Attendees 8:00–10:00 Philadelphia Speakers Series with Jean-Michel Cousteau (limited to 50)	

Conference Events



Sunday, October 11, 2:00–5:00 p.m.

Tour of Widener University and the City of Chester (Limited to 44)

Join Widener University President James T. Harris III as he leads a tour of Chester—Pennsylvania’s first city—and Widener University. Discover the rich history of the city and the university and find out how the two are working together, and with other partners, to build community resiliency through such projects as University Crossings, the Widener Partnership Charter School, the Widener Small Business Development Center, and the College Access Center of Delaware County.

Bus will load at the entrance to the Loews Philadelphia Hotel at 2:00 p.m. and return to the hotel at 5:00 p.m.

Sunday, October 11, 5:30–7:00 p.m.

Opening Reception: Loews Philadelphia Hotel

Join us for the opening reception sponsored by Capstone Development Corp. and featuring CUMU’s first academic regalia fashion show by Oak Hall Cap & Gown. Philadelphia Mayor Michael A. Nutter will personally welcome you to Philadelphia followed by greetings from CUMU Executive Committee President Steven Diner and Widener University President James T. Harris III.

Monday, October 12, 5:30–7:30 p.m.

Reception at the Franklin Institute Science Museum

Join us in the Benjamin Franklin Memorial Hall, our nation’s tribute to its greatest citizen. Relax and visit

with colleagues in this awe-inspiring marble rotunda encapsulated by sixteen three-story columns. The reception will feature Jane Golden, executive director of the City of Philadelphia Mural Arts Program. Golden has supervised the completion of more than 3,000 murals throughout Philadelphia, earning Philadelphia international recognition as the “City of Murals.” Derek Pitts, chief astronomer for the Franklin Institute will provide welcoming comments.



Monday, October 12, 8:00–10:00 p.m.

Philadelphia Speakers Series at the Kimmel Center (\$25 per person, limited to 50 people)

Find out why the Philadelphia Speakers Series, presented by Widener University, is one of the hottest tickets in town, and what makes the Kimmel Center one of the city’s finest performing arts venues. Speaker: Jean-Michel Cousteau, explorer, environmentalist, educator and documentary film producer will be the guest speaker.



Monday, October 12, 8:00–10:00 p.m.

Walking tour of Center City Philadelphia

(for student attendees)

Discover Philadelphia at night. Tour the hotspots of Center City Philadelphia with those who know—Widener University students.



Tuesday, October 13, 1:30 p.m.

Philadelphia Mural Arts Tour

Take a walking tour of the world’s largest outdoor art gallery. The Philadelphia Mural Arts Program boasts 3,000 murals spread throughout the city. You won’t be able to see all 3,000, but you will see a sample of what the *Philadelphia Inquirer* recently described as “by far, the most important, prolific and successful public art project in the nation.”

Keynote Presenters

Sunday, October 11, 5:30 p.m., Opening Reception, Regency Ballroom

The Honorable Michael A. Nutter Mayor, City of Philadelphia

Michael A. Nutter became the 98th Mayor of Philadelphia in January 2008. He served as a Philadelphia City Councilman for nearly 15 years, engineering ethics reform legislation and leading a successful effort to pass a citywide smoking ban. He worked to lower taxes and increase the number of police officers patrolling the streets. His campaign for mayor focused on four key areas: crime, education, job creation and ethics reform. In November 2007, he was overwhelmingly elected mayor of the city of Philadelphia with 83 percent of the vote. *The Philadelphia Inquirer* wrote that Mayor Nutter “is easy to imagine on the national stage as the fresh voice of a resurgent Philadelphia.”

Monday, October 12, 7:30 a.m.–9:30 a.m., Regency Ballroom
Executive Leadership Panel

Anchor and Catalysts: The Role of Urban and Metropolitan Universities in Revitalizing American Cities

Moderator

Ira Harkavy Founding Director and Associate Vice President, Center for Community Partnerships, University of Pennsylvania

Ira Harkavy is associate vice president and founding director of the Barbara and Edward Netter Center for Community Partnerships at the University of Pennsylvania. As such, Harkavy has helped pioneer service learning and academically based community service courses as well as participatory action research projects that involve faculty and students from across the university. Harkavy has written and lectured widely on the history and current practice of urban university-community partnerships and strategies for integrating the university missions of teaching, research, and service. In addition to his action oriented work, Harkavy also teaches in the departments of history, urban studies, Africana studies, and city and regional planning.



Panelist

Steven J. Diner Chancellor, Rutgers University-Newark

Chancellor Steven J. Diner has headed Rutgers University-Newark since July 2002. He has devoted himself to building Rutgers-Newark as a leading urban research university. Under his leadership, Rutgers-Newark has built strong ties between the campus and the local community. He is deeply involved in the revitalization of downtown Newark, where the campus sits. He is committed to creating a vibrant twenty-four/seven community in the neighborhood surrounding the campus. He is the current president of the Coalition of Urban & Metropolitan Universities.

Dr. Diner’s publications include *A City and Its Universities* (1980), *Housing Washington’s People* (1984), and *A Very Different Age: Americans of the Progressive Era* (1998).



Panelist

James T. Harris III President, Widener University

Dr. James T. Harris III became the ninth president of Widener University in 2002. During Dr. Harris’ tenure at Widener, he has worked diligently to promote collaboration and a generosity of service among his faculty, staff, and students and the communities that they serve. To that end, he has been instrumental to Widener’s recognition as one of the top fifty national universities in the *Washington Monthly’s* most recent college rankings as well as among the top tier of the nation’s higher education institutions for its support of innovative and effective community service and service-learning programs by the President’s Higher Education Community Service Honor Roll.



Panelist

Ann Weaver Hart President, Temple University

Ann Weaver Hart became the ninth president of Temple University in May 2006. She is the first female president in the University’s 125-year history. Dr. Hart previously served as president of the University of New Hampshire and provost and vice president for Academic Affairs at Claremont Graduate University. Her research interests include leadership succession and development, work redesign and organizational behavior in educational organizations, and academic freedom. Dr. Hart is chair of the Commission on International Programs of the Association of Public and Land-Grant Universities. She also serves on the board of the Greater Philadelphia Chamber of Commerce, the CEO Council of Growth, the Philadelphia African American Museum, the Avenue of the Arts, and the Pennsylvania Women’s Forum.



Panelist

Dennis H. Holtschneider President, DePaul University

The Rev. Dennis H. Holtschneider, C.M., became DePaul University’s 11th president in 2004. Since his inauguration, he has led the successful completion of the university’s prior strategic plan and creation of its current six-year plan, VISION twenty12. Prior to DePaul, he gained a university-wide perspective as executive vice president and chief operating officer at Niagara University in Niagara Falls, N.Y., from 2000 to 2004, where he directed the university’s strategic planning efforts and daily operations of the campus. Adding research to experience, Father Holtschneider led two national studies examining trends in governance and leadership in American Catholic colleges and universities.

Monday, October 12, 12:30 p.m., Regency Ballroom
Environment and Sustainability



Jean-Michel Cousteau
Underwater Explorer, Educator and Environmentalist

For more than four decades, Jean-Michel Cousteau has used his vast experience to communicate to people of all nations and generations his love and concern for our water planet. The son of ocean explorer Jacques Cousteau, he spent much of his life with his family exploring the world's oceans. After his father's death in 1997, Cousteau founded Ocean Futures Society to carry on this pioneering work. As president of Ocean Futures Society, Cousteau travels the globe, meeting with world leaders and policymakers, educating young people, documenting stories of change and hope, and lending his reputation and support to help energize alliances for positive change.

Monday, October 12, 5:30 p.m., Franklin Institute



Jane Golden
Executive Director
City of Philadelphia Mural Arts Program

Since the City of Philadelphia Mural Arts Program's inception in 1984, Jane Golden has spearheaded the public art organization as it works in partnership with communities, grassroots organizations, city agencies, schools and philanthropies. Now in its 25th year, Golden has supervised the completion of more than 3,000 murals throughout Philadelphia, earning Philadelphia international recognition as the "City of Murals." Golden holds a master of fine arts from the Mason Gross School of the Arts at Rutgers University, and degrees in fine arts and political science from Stanford University. In addition, Golden has received honorary PhDs from Swarthmore College, Philadelphia's University of the Arts, Widener University, and most recently Haverford College and Villanova University.

Tuesday, October 13, 12:00 p.m., Regency Ballroom
University Partnerships Town Hall

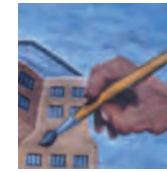


Sherone E. Ivey
Deputy Assistant Secretary, Office of University Partnerships
U.S. Department of Housing and Urban Development

In her role as deputy assistant secretary of the Office of University Partnership, Sherone Ivey works with colleges and universities to expand their efforts to make a difference in their communities. The Office of University Partnerships is committed to helping universities join with their neighbors in partnerships that address urban problems—partnerships that enable university students, faculty, and neighborhood organizations to work together to revitalize the economy, generate jobs, and rebuild healthy cities.



About CUMU



The Coalition of Urban and Metropolitan Universities brings together universities that share the mission of striving for national excellence while contributing to the economic development, social health, and cultural vitality of the urban or metropolitan centers served.

The Coalition began, in part, because some urban and metropolitan presidents became increasingly aware of the things their campuses had in common, and of shared frustrations. The mission and characteristics of their institutions were not well understood, and any system for ranking or describing universities and colleges was based on the traits of highly traditional, residential colleges serving full-time 18-21 year-old students. Systems such as Carnegie's classification scheme did not include measures for the significant applied research and service activities

of urban and metropolitan universities. These presidents found themselves gathering on an ad hoc basis at the national meetings of major higher education associations, and eventually decided to organize their own affiliate group.

The founding members shaped the Coalition as an association that would focus on exchange and communications to share information about our institutions for the purposes of enhancing internal planning and external understanding. The group initiated a journal, *Metropolitan Universities*, as its first endeavor. The journal continues to serve as a unique venue for exploring the characteristics and experiences of urban and metropolitan universities. They also sponsored occasional national conferences, and engaged most recently in funding direct research on our institutions. But its primary goal continues to be the enhancement of internal and external understanding of the metropolitan mission.

Coalition of Urban and Metropolitan Universities Members*

U.S. Universities

- Boise State University
- Bowie State University
- Buffalo State College (SUNY College at Buffalo)
- California State Polytechnic University, Pomona
- California State University, Dominguez Hills
- California State University, Fresno
- California State University, Fullerton
- California State University, Sacramento
- Chicago State University
- College of Staten Island
- Coppin State University
- Eastern Michigan University
- Florida International University
- George Mason University
- Harrisburg University of Science and Technology
- Indiana University Northwest
- Indiana University-Purdue University Indianapolis
- Jackson State University
- Louisiana State University in Shreveport
- Macon State College
- Medgar Evers College
- Metropolitan State College of Denver
- Metropolitan State University
- Missouri State University
- Morgan State University
- North Carolina Central University
- Northern Kentucky University
- Pace University

- Park University
- Portland State University
- Roosevelt University
- Rutgers University, Camden Campus
- Rutgers University, Newark Campus
- San José State University
- Southern Illinois University Edwardsville
- Temple University
- Texas State University-San Marcos
- Towson University
- University of Arkansas Fort Smith
- University of Arkansas Little Rock
- University of Baltimore
- University of Central Florida
- University of Central Oklahoma
- University of Cincinnati
- University of Colorado at Colorado Springs
- University of Colorado Denver
- University of Connecticut-Greater Hartford
- University of Houston System
- University of Louisville
- University of Massachusetts - Boston
- University of Michigan-Dearborn
- University of Missouri-Kansas City
- University of Missouri-St. Louis
- University of Nebraska-Omaha
- University of Nevada, Las Vegas
- University of North Carolina at Charlotte
- University of North Carolina at Greensboro
- University of North Florida

- University of North Texas System
- University of South Carolina Upstate
- University of South Florida
- University of South Florida-Lakeland
- University of South Florida-St. Petersburg
- University of Southern Maine
- University of Tennessee at Chattanooga
- University of Texas at Arlington
- University of Toledo
- University of Washington, Tacoma
- University of Wisconsin-Milwaukee
- University of Wisconsin-Parkside
- University System of Maryland
- Virginia Commonwealth University
- Washington State University-Spokane
- Washington State University-Vancouver
- Weber State University
- Westfield State College
- Widener University
- Wright State University
- Xavier University
- Youngstown State University

International Universities

- London Metropolitan University (UK)
- Ryerson University (Canada)
- University of Western Sydney (Australia)
- UPAEP-Barrio de Santiago (Mexico)
- York University (Canada)
- Zayed University (United Arab Emirates)

* membership as of July 1, 2009

Coalition of Urban and Metropolitan Universities Executive Committee

President

Steven Diner, Chancellor
Rutgers University, Newark

Vice-President

John Welty, President
California State University, Fresno

Secretary-Treasurer

Robert Caret, President
Towson University
(Coalition Headquarters CEO)

Chair, Conference Committee

James T. Harris III, President
Widener University

Chair, Membership Development Committee

Mickey Burnim, President
Bowie State University

Chair, Programs and Policy Committee

John Christensen, Chancellor
University of Nebraska, Omaha

Members-at-Large

Joel Anderson, Chancellor
University of Arkansas, Little Rock

Wim Wiewel, President

Portland State University

President Emeritus

James Votruba, President
Northern Kentucky University

Executive Editor of the Metropolitan Universities Journal

Barbara Holland

Coalition Administrator

Bobbie O'Connell
Towson University

* All terms begin/expire at the Annual CUMU Conference

About Widener University

Widener University is a private, metropolitan university that emphasizes academics and community service. Dynamic teaching, active scholarship, personal attention, and experiential learning are key components of the Widener experience.

Widener offers the wide range of course offerings of a large university combined with the intimate class sizes and faculty interaction of a small college. Our 110-acre campus is located just 20 minutes from exciting Center City Philadelphia. At Widener, you will find a university committed to diversity and preparing our students for living in a pluralistic and ever-changing world.

As a comprehensive doctorate-granting university, Widener offers liberal arts and sciences and professional programs leading to associate's, baccalaureate, master's, and doctoral degrees.

Most Widener students come from the Philadelphia metropolitan area and many alumni stay in the Philadelphia metropolitan area after they graduate. We train students for careers by teaching them the real-world skills and expertise needed to succeed in today's competitive job market. In fact, thanks to extensive co-op

programs and internship opportunities at leading companies such as Boeing, Campbell Soup Co., and Comcast-Spectacor, our graduates enjoy a 90 percent employment rate.

Community service is also a vital component of the Widener experience. Widener emphasizes learning in and out of the classroom. Our students make the most of Chester and the surrounding area as a living laboratory, and many of our faculty members are pioneers in the field of service learning. Whether they are tutoring Chester school children, creating ad campaigns for local non-profit organizations, or traveling to South America to build a school, our students learn the values of good citizenship and altruism.

Widener also serves as an educational and cultural resource for the Philadelphia metropolitan region. Three of the university's four campuses are in the Philadelphia area. The main campus's Fresh Baked Theatre Co. for children, the Philadelphia Speakers Series at the Kimmel Center, and The OSHER Lifelong Learning Institute for older adults in Exton, PA, are only a few of the myriad offerings available from Widener throughout the Philadelphia metro region.



CUMU Partners



Lynton Award Winner

Nick Tobier

Assistant Professor, School of Art and Design
University of Michigan, Ann Arbor

CUMU is proud to announce the recipient of the 2009 Ernest A. Lynton Award for the Scholarship of Engagement

The annual Ernest A. Lynton Award for the Scholarship of Engagement recognizes a faculty member who connects his or her teaching, research, and service to community engagement. The scholarship of engagement represents an integrated view of scholarly activity in which teaching, research, and service, overlap and are mutually reinforcing. It is characterized by scholarly work tied to a faculty member's experience, is of benefit to the external community, is visible and shared, and reflects the mission of the institution. The Lynton Award is presented in partnership with New England Resource Center for Higher Education (NERCHE)



American Association of State Colleges & Universities (AASCU) Millennium Leadership Institute (MLI) Program

CUMU is proud to serve as a sponsor of the Millennium Leadership Institute.

The Millennium Leadership Institute (MLI) was founded as a prestigious opportunity for member-institutions of AASCU to nominate their most promising senior administrators to participate in their annual leadership development program. MLI's program is designed to strengthen the preparation and eligibility of persons who are traditionally underrepresented in the roles of president or chancellor in our nation's colleges and universities.



Engagement Academy of University Leaders

CUMU is pleased to endorse the Engagement Academy for University Leaders.

For many of our institutions, engagement with the external community is increasingly critical to their long-term success. Virginia Tech is pleased to announce the Engagement Academy for University Leaders on June 7–11, 2010. This executive leadership experience is designed to build institutional capacity for engagement within the context of the institution's strategic plan. Visit the EA website for more information: www2.cota.vt.edu/ea/.



ACE Fellows Program CUMU is pleased to be a sponsor of the ACE Fellows Program

The partnership between CUMU and the ACE Fellows Program was designed to widen the pipeline of Fellows who choose to do their fellowship in a university that is defined as urban and metropolitan. It is our hope that this fellowship will help to deepen the understanding of the unique issues that are inherent in these institutions.

Thank You to Our Sponsors

Diamond Sponsor



Silver Sponsor



Bronze Sponsors



Gold Sponsor

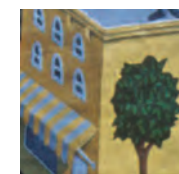


Exhibitors



Conference Agenda

All events will be held at the Loews Philadelphia Hotel unless otherwise noted



Sunday, October 11

10:00 a.m.–7:00 p.m.

Mezzanine, Second Floor

Registration

11:00 a.m.–2:00 p.m.

Congress Room A-B

Provosts' and Deans' Lunch/Session

(Open to session registrants)

Strategies for Diversifying the Faculty:

An Urban Imperative

University Leadership Council

Hot Issues on the Agenda for Academic Officers

Roundtable Discussion

This session for senior academic leaders at CUMU provides two mini-sessions focusing on top priorities for those charged with advancing the academic agenda of urban institutions: (1) best practices for recruiting and retaining a diverse faculty, and (2) an open exchange of all participants on issues of concern for the urban institutions' academic missions (leading in a recession, the academic impact of the urban mission, budgeting in an economic downturn, engaging faculty in the work of the urban institution, research implications for the urban mission, stimulus funding for an urban agenda, etc.).

11:00 a.m.–2:00 p.m.

Roberts Board Room

Executive Committee Lunch/Meeting

2:00–5:00 p.m.

Corner of 12th and Market Streets

Tour of Widener University and Chester

Join Widener University President James T. Harris III and James Turner, director of economic development for the city of Chester, for a tour Widener University and Pennsylvania's first city. Discover how Widener and Chester are working together to build community resiliency.

5:00–6:00 p.m.

Congress Room C

CUMU Committee Meetings

5:00–7:00 p.m.

Regency Ballroom, Second Floor

Exhibit Hall Open

5:30–7:00 p.m.

Regency Ballroom, Second Floor

Opening Reception

Sponsored by Capstone Development Corp.

featuring welcoming comments by Philadelphia

Mayor Michael A. Nutter, CUMU Executive

Committee President Steven Diner, and Widener

University President James T. Harris III.

6:30 p.m.

Lescaze 33rd Floor

Executive Committee Dinner

7:00 p.m.

Dinner on your own

Monday, October 12

7:00 a.m.–6:00 p.m.

Mezzanine, Second Floor

Registration

7:00 a.m.–7:00 p.m.

Parlor 2, Third Floor

Cyber Café Sponsored by Dell

8:00 a.m.–5:00 p.m.

Regency Ballroom, Second Floor

Exhibit Hall Open

7:30–9:30 a.m.

Regency Ballroom, Second Floor

Welcome Breakfast & Executive Leadership

Panel

Anchor and Catalysts: The Role of Urban and Metropolitan Universities in

Revitalizing American Cities

Ira Harkavy (moderator), University of Pennsylvania;

Steven Diner, Rutgers University-Newark; James T.

Harris III, Widener University; Ann Weaver Hart, Temple

University; Dennis H. Holtschneider, DePaul University

This panel of metropolitan university executives will

discuss the role of university leadership in applying

our human, intellectual, and institutional capital in

revitalizing the communities in which we are situated.

The advent of the new Obama Administration brings rich opportunities to leverage our institutional resources to focus on health care, education, the environment, the elimination of poverty, and economic development.

9:30–9:50 a.m.

Regency Ballroom, Second Floor

Break Sponsored by Oak Hall Cap & Gown

Concurrent Sessions I 9:50–11:00 a.m.

Washington Room A: Paper Presentations

1. Saviors of Our Cities: Survey of Best College and University Civic Partnerships

Evan Dobbelle and Michael Konig: Westfield State College

Presentation pertaining to the creation, findings, and ultimate use of the innovative survey, "Saviors of our Cities: Survey of Best College and University Civic Partnerships." Survey is relevant to broad range of engagement initiatives currently being implemented and used to link CUMU institutions with the William Clinton Global Initiative University.

2. Building Community Resilience: From Vision to Plan to Implementation

David W. Sink, Ronald Copeland and Michael Del Giudice: University of Arkansas-Little Rock, ED&W, Inc.

What is the role of metropolitan universities in ensuring their community's or region's resilience? Does the accepted focus on "catastrophic" natural and man-made threats preclude dealing with the more consistent, daily threat to community resilience posed by social and educational inequity? This case study will explore one community's effort to achieve broad-based, integrated "resiliency" that is as unique as its context, its conditions, and the people whose needs and desires have helped to shape it.

3. Addressing Occupational Trends and Community Needs at the University of Nebraska at Omaha

Steve Bullock, Linda Mannering and Luke Jankovic: University of Nebraska-Omaha, Economic Modeling Specialists, Inc.

This presentation will highlight two main elements related to the University of Nebraska at Omaha's (UNO) impact on the economic development of the

Program Agenda

surrounding community. The two focal points will include:

1. The development of academic programs that are aligned directly with future occupational trends in the metropolitan area.

2. The importance of a “creative class” to a healthy economy, which draws from the research of University of Toronto Professor Richard Florida, and UNO’s contributions to such a climate.

Washington Room B: Student Presentations

1. Beyond the University

Nicole Schiraldi, Sarah Elfret and Ryan Assadi: Towson University

Towson University collaborates with the Chamber of Commerce and the Greater Towson Council of Community Associations to host an event where students and surrounding neighbors come together to clean up the community. This event tackles three concerns of the student body: going green, safety, and being a part of a supportive community.

2. Measuring the Impact of University-Community Engagement

Joel Beutel: University of California-Merced

This paper measures whether increased levels of university/community engagement lead to a decrease in litigation outcomes. This is done by initially examining what areas of conflict exist between universities and communities. Next, I measure the level of university-community engagement and litigations that occur in California.

3. Teaching Social Work Practice Class in China

Melanie A. Swain, Travis S. Ingersoll, Shan Xu and Heather Witt: Widener University

This presentation describes a Social Work Practice class facilitated to a group of 40 undergraduate students at a large, urban university in Mainland China. Graduate students from Widener University developed the curriculum and evaluated its cultural appropriateness for use with Chinese clients. Recommendations for developing culturally appropriate models will be made.

Washington Room C: Paper Presentations

1. Key Elements of an Effective and Sustainable Diversity Initiative for an Urban University or College

William P. Austin: University of Nebraska-Omaha

This presentation defines diversity with regards to the demographics of individual institutions and the communities in which they are located, ways to focus on student intellectual and social development, the purposeful development and utilization of resources to enhance student learning, attention to the cultural differences learners bring to the educational experience and how to enhance the enterprise, and creating a welcoming learning environment.

2. A Towson Approach to School-Community-University Collaboration

Raymond P. Lorion: Towson University

The Cherry Hill Learning Zone Initiative represents a viable example of the metropolitan mission. With careful pacing and respect, it has expanded from school improvement efforts to initiatives into the community’s physical health and economic welfare. In the process, the university’s approach to teaching, scholarship and service has changed.

3. Utah Scholars Program: Enhancing Educational Infrastructure

Brenda Marsteller Kowalewski and Melissa Miller Kincart: Weber State University, Utah System of Higher Education

Four education related entities in Utah collaborate around building support for the Utah Scholars initiative which recommends a core course of study for students to complete in high school. College students are active mentors, tutors and family outreach advocates for “at-risk” students in the local schools.

Congress Room A: Paper Presentations

1. Dayton’s Neighborhood School Centers: A Shared Vision

Dick Ferguson: University of Dayton

When Dayton Public Schools committed to return to neighborhood K-8 schools, the community organized

to refocus programs in schools and neighborhoods.

This presentation describes the planning and implementation of Dayton’s Neighborhood School Centers. Emphasis is placed on the role of the University of Dayton Fitz Center for Leadership in Community.

2. Academy for Early Childhood Excellence: A Community University Partnership

Jaesook Gilbert and Helene Harte: Northern Kentucky University

This presentation shares the process and challenges of a university community partnership to improve the quality of care and education in childcare centers in the region by enhancing the early childhood knowledge of teachers.

3. Bringing Communities Together Through Education Compacts

Kimberley Cole and K. Jeanette Jacques: Florida International University

Many municipalities have signed education compacts with local school boards that are sitting on the bookshelf collecting dust. View how one university led the community, the municipal government, and the local school board to put aside their differences and work together.

Congress Room B: Panel Presentations

1. A Mechanism to Enhance and Stabilize Recruitment, Retention, and Enrollment Management... PPP Delivered Student Housing

L. Jeff Jones, Bruce McKee, Doug Brown and Robert L. Caret: Towson University, Capstone Development Corp.

Learn how and why universities are turning to public-private partnerships to develop new student housing communities, often on the “campus-edge,” to achieve not just real estate and facility development goals, but also, through collaboration between the development team and the university’s enrollment management teams, to enhance and stabilize recruitment, retention, and enrollment management.

Program Agenda

2. Connecting the Dots for Urban Entrepreneurship and Economic Development

Steven Diner, dt ogilvie, Stefan Pryor, Joseph Ritchie and Jeffrey Robinson: Rutgers University-Newark, City of Newark, Brick City Development Corp.

Urban metropolitan inner cities are the target of revitalization and economic development efforts. What policies encourage or facilitate collaborations to leverage strategies that work for better economic development outcomes? This panel explores the emerging role and influence of multi-sector collaboration strategies among urban universities, local government, and the business community.

Congress Room C: Paper Presentations

1. Public Health Collaboration across the Pond: London & New York

Eileen O’Keefe: London Metropolitan University

In response to the growing epidemic of childhood obesity facing London, England, and New York, two universities in the respective cities have developed an intercity collaboration to facilitate joint learning. The goal is to identify municipal-level policy responses that can reverse the rise of childhood obesity. The collaboration brings together researchers, students, public health officials and advocates from the two cities. This presentation will give an overview of the collaboration and consider one component: the joint action research project to position the universities as health promoting catalysts within the extended catchments they serve.

2. LaunchPad Program: Applied Research to Accelerate Job Growth and Investment

Jan W. Hillard and Brandi R. List: Northern Kentucky University

Northern Kentucky University’s LaunchPad Program is designed to accelerate job and investment growth of existing businesses in the service region by providing an in-depth look at existing industry, and collaborating with many regional partners. The applied research of the project is a transformative tool for the region’s job and investment future.

3. The Glass Book Project: Building Community Relationships for Social Change in Mental Health Reform

Nick Kline, Helga Luest and Ruta Mazelis: Rutgers University-Newark, Witness Justice

A collaborative cross-learning experiment, this project brings together students, a community organization, trauma survivors, a national nonprofit, and a federal agency. The project evolution has gone beyond the university community, reaching the federal agency level. Through this replicable model, a glass books exhibit is created that draws media attention.

11:00-11:15 a.m.

Regency Ballroom, Second Floor

Break Sponsored by Herff Jones College Division

FEATURED SESSION

11:15 a.m.–12:00 p.m.

Regency Ballroom, Second Floor

Presidential Address

featuring Chancellor Steven Diner, Rutgers University, Newark

Urban Renaissance Act Legislation Update featuring Chancellor Nancy Zimpher, SUNY
(Open to all conference attendees)

12:00–12:30 p.m.

Regency Ballroom, Second Floor

CUMU Presidents’ Annual Meeting

(CUMU member presidents only)

Poster Session 11:20 a.m.– 12:20 p.m.

Regency Ballroom Foyer, Second Floor

1. A View from the Community: Talking to the University

Michael W. Ledoux and Annette Anderson: Widener University, Widener Partnership Charter School

This poster presentation will attempt to document citizens’ views of the problems and joys of their community to present to university leaders. It is a community perspective of needs that university partners may help address.

2. Building Community, Making Connections, and Responding to the Needs of At-Risk Students: University and Community Partnerships

Susan S. McNiff, Courtney H. Kelly and Megan McCormick: Widener University

The benefits of university and community partnerships have gained attention in recent years. This poster presentation describes such a partnership between a university’s counselor education program and a community education foundation.

3. Health and Wellness Project with the Achievement Project of Chester

Kathryn Orme, Kimberly Crabtree and Kristoffer Surdukowski: Widener University

Low socioeconomic status is linked to decreased physical activity and poor nutritional habits. Young adults of low socioeconomic status who enter the college environment may be at a disadvantage with respect to healthy lifestyle choices as compared to peers of higher socioeconomic status.

4. Walk, Play, and Cross Safely: Widener Partnership Charter School Community Health and Wellness Project

Catherine Zalewski, Zachary Mitchell and Kallika Agarwal: Widener University

The built environment in urban areas presents many safety challenges for children. Widener University physical therapy students created safety education modules for the topics of stranger danger, safely walking to school, canine safety, and playground safety for second grade students. Ninety percent of students scored 100 percent on post-test evaluations that examined safety awareness in these areas.

5. The Role of the Urban University in Fetal Infant Mortality Review

Mary O’Connor: University of Missouri-Kansas City

A Fetal Infant Mortality Review Program (FIMR) is a community owned, action-orientated process organization which reviews fetal and infant deaths. The explicit aim of FIMR is to improve community systems and resources by utilizing the expertise of community members who frequently are professionals with academic appointments at the urban university.

Program Agenda

6. Succeeding in School and Beyond: Communities that Make a Difference

Gilda Martinez: Towson University

Fifty successful African-American students from low socioeconomic areas throughout the United States participated in this multiple-case study, which sought to unveil how they succeeded along with recommendations they had for future students. To gather the data, surveys and interviews were administered and SAT scores and scholarship essays were reviewed.

7. On the Significance of Behavioral and Cognitive Differences Among Victims and Non-Victims of Elder Financial Abuse

Nicole Grandmont-Gariboldi: St. Thomas University

This poster session examines how elder financial abuse could be prevented by learning more about behavioral and cognitive differences among victims and non-victims. We test the effects of financial literacy and persuasion and prevention education as deterrents to fraud. The study should provide valuable information for developing elder abuse awareness programs.

8. Validating Sexual Anxiety and Body Image Scales in China

Travis S. Ingersoll, Heather Witt, Melanie Swain and Shen Xu: Widener University

The purpose of this research was to test translated versions of the Sex Anxiety Scale Inventory, Body Cathexis Scale, and the Body Checking Questionnaire, with students from Chongqing Technology and Business University, in order to verify their validity and reliability for use with Chinese populations.

9. The St. John's University/New York City Department of Homeless Services' Advantage Academy Partnership: Engaging in Program Assessment in an Effort to Connect Action with Impact

Debra Stein, Randolph Ortiz and Richard Sinatra: St. John's University

The NYC Department of Homeless Services and St. John's University Advantage Academy partnership

provides homeless, single parents the opportunity to earn an AS in information technology or business. The Advantage Academy assessment plan utilizes a unique array of pooled resources to assess the academic, financial, and personal impact upon participants.

10. A Partnership for Wellness: Addressing Stress and Violence

Glenda Wrenn, Jane Jue and Lorraine Thomas: University of Pennsylvania

A Partnership for Wellness is a project addressing resources that help people cope with stress and violence building on community strengths. Conducted by a cohort of clinical scholars at the University of Pennsylvania, in partnership with the Health Annex, this serves as a model of engagement for academic and community members to facilitate community resilience.

11. The Chester Children's Art Fair

Melanie Swain, Travis S. Ingersoll, Colin Sutton and Jenny Wyatt: Widener University

This presentation will illustrate the Children's Art Fair, a collaborative effort between Widener University's Center for Social Work Education and the Nia Center, a Chester community-based arts foundation. The event celebrates the artwork of local children and helps enhance their self-esteem and resiliency as well as promote community engagement.

FEATURED SESSION

12:30–1:40 p.m.

Regency Ballroom, Second Floor Luncheon/Keynote

Environment and Sustainability

Jean-Michel Cousteau: underwater explorer, educator, and environmentalist

Drawing on 40 years of experience exploring the world, designing, and interacting with the business community, Cousteau shows the need to look upon nature as a business and what business can learn from nature. He presents many advances in sustainable practices, ranking from his own environmentally responsible resorts to advances within the world's

leading corporations. Cousteau's presentation will be followed by the announcement of the 2009 Ernest A. Lynton Award for the Scholarship of Engagement.

FEATURED SESSION

1:50–3:00 p.m.

Tubman Room, Third Floor

Lynton Award Winner Session

Starts in the Streets

Nick Tobier: University of Michigan, Ann Arbor

I saw an elephant walking down the street, forever changing how I thought about unexpected events in everyday life. As an artist-educator, I believe that instituting imagination is a public good. These projects, I hope, are a bridge between people and their places through shared experience—and someone's elephant.

Concurrent Sessions II 1:50– 3:00 p.m.

Washington Room A: Paper Presentations

1. Social Work in the Engaged University

Elisa Martin and Loretta Pyles: University at Albany

As the engaged university movement continues to grow and develop, social workers have found that the university-community border is an important location for social work practice. We will analyze and compare the knowledge, skills, and values central to university-community engagement in relation to those of social work.

2. Building Resilience in Communities through Nonprofit Leadership

Bernard McCarthy, Belinda McCarthy and Rachelle Darabi: Missouri State University

This paper examines how one university developed low cost nonprofit leadership programs for local agencies, enhancing both capacity building and the conceptual and management tools necessary to sustain community organizations.

3. Social Work Counseling Services: Building Community and Student Capacity

John Poulin, Cheryl Sadeghee and Pat Mullen: Widener University

This presentation describes an innovative university sponsored agency that seeks to strengthen the capacity of a disadvantaged community while providing social

Program Agenda

work and clinical psychology students with cutting edge internship learning opportunities. The panel will consist of five presentations on Social Work Counseling Services by agency supervisors and student interns.

Washington Room B: Student Presentations

1. Youth Matters: Cultivating Civic Engagement and the Sociological Imagination through Participatory Action Research

Reuben Miller and Joel Ritsema: Loyola University-Chicago

In an effort to build capacity for sustained youth civic engagement, social researchers partnered with a large, diverse Midwestern high school to facilitate youth-led participatory action research. This paper reflects on the process of employing a student-centered approach in studying social problems, and advocates for integrating youth voice into policy-relevant research.

2. Advancing the Urban Forestry Initiative in Chester, PA by Using Geographic Information Systems and Global Positioning Technology to Map the Location and Condition of Shade Trees along Selected Corridors in the City

Amanda Hartnett and Douglas Shultz: Widener University

The Chester Shade Tree Commission works to educate the residents of Chester about the benefits of trees and advance an urban forestry initiative. Students used Global Positioning System units and Geographic Information Systems technology to map tree locations and tree attributes, and identified potential tree planting spots for future development.

3. Current Trends in Effective Components of Cohort Modeled Educational Doctorate Programs

Denise R. Hearn: Widener University

This presentation summarizes ten cohort model components found to be necessary for effectively designing educational doctorate cohort programs. These components offer a strategy for promoting

positive student and administrative management outcomes based on their potential to positively impact student graduation rates through increases in persistence-to-degree and decreases in time-to-degree.

Washington Room C: Paper Presentations

1. The Parents' Academy: A Program for Supporting Caregivers in Fostering Literacy Skills

Dana Korin and Annemarie Jay: Widener University

This presentation describes a program for supporting parents and caregivers of students in grades K-4 at an urban charter school. University faculty, caregivers, and administrators developed a series of topical workshops to foster school-home literacy connections. Interview and survey outcomes highlight this strengths-based approach to community partnership for primary prevention of literacy deficits.

2. Enhancing Public School Education: A Collaborative Partnership for School Resiliency

Henry Cunningham and Starr Lewis: University of Louisville

Urban schools in impoverished neighborhoods are plagued with multiple issues contributing to low graduation rate. University of Louisville partnered with the school district to transform five schools into high-performing schools. The partnership which involves the entire university community, enhances faculty scholarship, student learning, and civic education, and nurtures school resiliency.

3. Community Development through Service Learning

Alice Kaiser-Drobney, Laurie Emery and Lisa McCord: Slippery Rock University of Pennsylvania

Slippery Rock University students in a 1997 service-learning course launched a two-day per week tutoring program for New Castle children. Come learn how this idea became a regional model of what a university can do in an urban setting to bring stability to a neighborhood, consistency to the lives of residents, and hope to people who have lost it.

Congress Room A: Paper Presentations

1. Building Sustainable Communities Part I: Developing Meaningful University/Community Collaborations

Marina Barnett, James Turner and Nancy Chavez: Widener University, City of Chester, Pennsylvania Weed & Seed Program

This workshop is the first of a two part presentation designed to illustrate ways universities can engage in capacity building in local communities through the development of partnerships to facilitate the promotion of healthy, sustainable communities. The discussion will utilize a strengths perspective in assessing communities and organizations.

2. University and College Retirement Contributions as a Financial Foundation for Community Development

Glenn Beamer: University of the Sciences Philadelphia

This paper estimates the potential for Philadelphia area college and university faculty and staff members to create a dedicated pool of financial capital by dedicating two percent of retirement savings contributions to "triple bottom line" investing that seeks social, financial, and environmental returns.

3. Linking Social Capital to Build Community Capacity: A Logical Role for Urban Colleges and Universities

Amy Sue DeSonia: Baker College

Through long-standing ties and commitment to the communities that they are rooted in, urban "academies" are logical settings for developing durable networks that promote and sustain successful community and economic development. Colleges and universities have the capacity to leverage existing resources, form strategic partnerships, encourage lifelong learning and civic engagement, perform action research, and to identify the support systems necessary to sustain both single- and cross-community endeavors to foster community resilience.

Program Agenda

Congress Room B: Panel Presentations

1. Strengthening Community: A College Readiness Academy

Anita Thomas and Jennifer Quigley: University of Baltimore

The University created the HEROES Academy, a unique mentoring program for high school students that pairs them in mentoring relationships with University staff as they begin making decisions about their college aspirations and life after high school. The panel will discuss the creation of the HEROES Academy and its experiences with the program beyond its successful launch.

2. Not Just a Community Organizer: Community/Campus Connections Through Organizing

Judith Liu, John Loggins and Brenna Hughes: University of San Diego

Blending traditional academic understanding with social action, the course, “Community, Consensus, and Commitment”—an upper-division sociology course—teaches participants one form of community organizing. The presenters (including a former student) will discuss the challenges and successes of the course, their roles, and how other institutions can create a similar course.

Congress Room C: Paper Presentations

1. Community Leadership Development through University-Based Service Learning

Hal S. Shorey: Widener University

Helping young people develop leadership skills is one means of helping them transition into adult roles where they can benefit their native communities. In this presentation I will describe how such leadership training can be delivered at minimal cost through a graduate level leadership service-learning class in conjunction with a university based leadership center.

2. Urban Resiliency: The Role of the Urban University in Fostering Crime-Related Research

Mark Winston: Rutgers University-Newark

Crime has a direct impact on urban resiliency. Crime-related research fosters some understanding

of the causes of crime and the impact of various factors in reducing crime. Crime-related research reflects complexity, often in inconclusive and conflicting findings. The urban university mission fosters and supports rigorous scholarship that addresses these difficult research questions.

3. When an Urban Serving, Community Engaged HBCU is Not Enough: The Story of One Institution

Reginald S. Avery, Albert C. Robinson and Kenneth O. Morgan: Coppin State University

This urban serving HBCU, initially built in an at-risk community, remains in an at-risk urban community. Its mostly black, working class student population and its legacy of institutional under-funding help make the university and the community organically connected. Still its legacy of significant community engagement continues with new challenges and vision.

3:00–3:20 p.m.

Regency Ballroom, Second Floor
Break Sponsored by USA Today

FEATURED SESSION

3:20–4:30 p.m.

Tubman Room, Third Floor

Current Public Policy Perspectives in Higher Education

Ed Elmendorf and Dan Hurley, American Association of State Colleges and Universities; Sarah Flanagan, NAICU

The economic recession and policies at the state and federal level impact postsecondary institutions across the county. Learn the latest on the states’ fiscal condition and its impact on funding as well as news from the federal higher education agenda with specific updates on ARRA funding, financial aid, and the Post-9/11 GI Bill.

Concurrent Sessions III 3:20 – 4:30 p.m.

Washington Room A: Panel Presentations

1. Community-University Assets Coming Together in the Jane Finch/Black Creek Communities

Uzo Anucha, Sue Levesque and Sue Wilkinson: York University, Jane Finch Community and Family Centre

Assets Coming Together explores the possibilities of community/university collaboration through the lens of a recently established university office, the York University-TD Community Engagement Centre located in a shopping mall in an under-resourced, high needs community. The presentation focuses particularly on a recent community based research project, “Assets Coming Together for Youth: Linking Research, Policy, and Action for Positive Youth Development that will build assets for youth in the Jane Finch community.

2. The UNO Building Bright Futures Initiative: A University/Community Collaboration to Help Low-Income Children Achieve School Success

Sara Woods, Nicole Schaefer and Paul Sather: University of Nebraska-Omaha

Called one of the county’s most aggressive and comprehensive efforts to ensure low-income children achieve academic success, Omaha’s Building Bright Futures initiative is partnering with UNO to implement key strategies. This panel will highlight UNO’s administrative approach, programs, and service learning strategies along with lessons learned. A group discussion will follow.

Washington Room B: Paper Presentations

1. Assessing the Assessment: Towards a Comprehensive Model of Civic Engagement Impact Assessment

Stephen Kauffman: Widener University

This presentation describes the necessary components of an innovative, comprehensive model for assessing the impacts of civic engagement in use at a mid-sized eastern university. The presentation presents the domains, variables, assessment issues, and methods within the model. The implications for transferability of the model are discussed.

2. Building on Our Strengths: Regional Collaboration for Community Capacity Building and Student Engagement

Charlene J. Gray, Kate L. Dantsin and James M. Heffernan: Pennsylvania Campus Compact

This presentation will discuss the successful model

Program Agenda

of regional collaboration among higher education institutions and community-based organizations. Regional networks provide a mechanism to broaden the impact of service-learning through shared community partner development, faculty development, and student leadership. These networks were supported by the Pennsylvania and New York Campus Compacts and funding from Learn & Serve America.

3. Creating Community Resiliency Through Innovative Community Partnerships

Valerie Rutledge, Linda Johnston and Carol Brand: University of Tennessee-Chattanooga

The economy has had a significant impact on specific programs at UTC. The ways it has affected three programs and how they have been modified and streamlined, but (most importantly) retained, presents a picture of how one institution has addressed the challenges created by an uncertain economy.

Washington Room C: Paper Presentations

1. Violence Prevention Collaborative

Jenny Wyatt: Widener University

This presentation will summarize the development and work of a community collaborative as an example of how academic institutions can provide leadership to strengthen community resilience, specifically in the area of violence prevention, and work with existing resources to enhance effectiveness and develop targeted initiatives that address community needs.

2. Bridging the Gaps: Working to Provide Mutual Benefit

Lucy Tuton and Dianne Butera: University of Pennsylvania, Temple University

For two decades, Bridging the Gaps has educated students about the reciprocal connections between a community’s social economic circumstances and the health of populations. The panel discussion will address sustainability of collaborative projects as well as the successes and challenges of relationships among academic institutions and communities.

3. Building Capacity of Urban Service Providers

Marc Holzer, Robert Shick and Judith J. Kirchoff: Rutgers University-Newark

Academic-community partnerships are increasingly important in an era of constrained resource. This panel will examine cases of partnering in public education, public housing, municipal services, and citizen engagement. Most of those cases are success stories, but obstacles to progress will also be examined. Each case will involve academic and community participants.

Congress Room A: Paper Presentations

1. University-Municipal Cooperation in Tracking Urban Behavioral Health

Stephanie Bush-Baskette and Donita Devance: Rutgers University-Newark

This presentation will provide an overview of how the Joseph C. Cornwall Center for Metropolitan Studies, Rutgers University (Center), works closely with the City of Newark as a research partner to improve the health status of the city’s residents.

2. A Civically Engaged Campus Makes for a Resilient Community

Darcy Accardi: Towson University

A civically engaged campus benefits urban areas as student learning spills over into the surrounding community in the form of service-learning, community-based research, and other community partnerships. Come learn how to build a campus model for civic engagement that adds to the resiliency of surrounding urban communities.

3. From “Partner” to “Principal” in Community Resiliency

John Stockwell, Marsha Dowell and Darrell Parker: University of South Carolina-Upstate

The University of South Carolina Upstate is moving beyond “partner” to “principal” in building community resiliency. This panel addresses the breadth of the university’s engagement in the metro corridor it serves: initiatives to double baccalaureate attainment, track community indicators, form health care partnerships, develop youth leadership, and support economic development.

Congress Room B: Panel Presentations

1. Leadership in Brownfield Development: Teaching by Example

S. Ted Bucaro and Rick Perales: University of Dayton

The presentation will discuss the collaborative approach adopted by the University of Dayton, a Catholic, Marianist university, and other stakeholders to transform a long-fallow brownfield into a catalytic community development. Topics include: building community support, working with governmental agencies, and juggling the many funding sources involved in a brownfield redevelopment.

2. The Effectiveness of Partnerships to Achieve Economic Development

Joe Baker and Cecilia McCormick: Widener University

Because of its location in an urban area (Chester, PA) in dire need of economic development, Widener University has as one of its strategic goals to address the metropolitan area’s most pressing concerns by developing initiatives that contribute to regional cultural and economic development while enriching Widener’s educational programs. Without the financial resources to accomplish such a huge project by itself, Widener forged partnerships with other business, political, and community groups that resulted in the start of an amazing turnaround in the city of Chester. Widener will share its experiences and lessons learned in the development of the partnerships that enabled its economic development initiative to succeed in Chester.

Congress Room C: Paper Presentations

1. Rise to the IUPUI Challenge: Building Educational Infrastructure to Facilitate Undergraduate Experiential Learning

Mary L. Fisher: Indiana University-Purdue University Indianapolis

Each undergraduate student is challenged to include at least two of the four “RISE to the IUPUI Challenge” experiences—research, international, service learning and experiential learning—in their degree programs. The paper presents the educational infrastructure

Program Agenda

needed to implement this dynamic initiative.

2. Rise to the IUPUI Challenge: One Urban University's Model of Leveraging Student/Community Engagement

Mary L. Fisher and Uday Sukhatme: Indiana University-Purdue University Indianapolis

IUPUI has issued a challenge to all undergraduate students to take at least two courses designated in our experiential categories: RISE (Research, International, Service learning, and workplace Experience). By issuing this challenge, IUPUI increases the scale of students actively learning and contributing to community improvement in our urban setting.

3. Building Sustainable Communities Part II: Using GIS Mapping to Create Meaningful Assessments

Marina Barnett and Chad Freed: Widener University

Students and community residents collected and analyzed data and developed a methodology to determine the existing skills, knowledge, and assets of residents in Chester, Pennsylvania. This workshop will describe the process of asset mapping and present case examples of asset maps that were created using GIS software.

FEATURED SESSION

5:30–7:30 p.m.

Franklin Institute Science Museum, Franklin Room

Enjoy refreshments with colleagues and learn about the world's largest outdoor art museum, the Philadelphia Mural Arts Program, from Executive Director Jane Golden

8:00–10:00 p.m.

Hotel Lobby

Tour of Center City Philadelphia

(for student attendees)

8:00–10:00 p.m.

The Kimmel Center

Philadelphia Speakers Series

featuring Jean-Michel Cousteau, underwater explorer, educator, and environmentalist

(Pre-registration required)

Tuesday, October 13

7:00 a.m.–2:00 p.m.

Mezzanine, Second Floor

Registration

7:00 a.m.–2:00 p.m.

Parlor 2, Third Floor

Cyber Café Sponsored by Dell

8:00 a.m.–12:00 p.m.

Regency Ballroom, Second Floor

Exhibit Hall Open

7:15–8:30 a.m.

Regency Ballroom, Second Floor

Breakfast Roundtable Discussions

Sponsored by Geico

1. Youth Micro Program: A University-Community Partnership that Improves the Life Chances of Youth

Robert Atkins, Chad Ripberger and Daniel Hart: Rutgers University

The presenters are university faculty who have experience as founders and volunteers in university affiliated youth development programs. They will discuss their experiences and guide discussion on the role of these programs in improving the life chances of youth and building successful university-community partnerships.

2. The Power of Partnership and Community: Graduate! Philadelphia Helps Adults Go Back to and Through College

Hadass Sheffer and Don Devilbiss: Graduate! Philadelphia, Widener University

Ensuring that the 300,000 college dropouts in the Greater Philadelphia region complete their degrees is beneficial for the area's colleges and economy. Graduate! Philadelphia provides support to working adults for completing college and a collaborative infrastructure for colleges and other stakeholder groups to improve the region's talent pool.

3. Building Community Social Capital: The University's Role

Marian Deutschman and Warren Gleckel: Buffalo State College

This presentation will focus on how the College and Community Partnership Office (CCPO) at Buffalo State College is working to ensure that all stakeholders (college and community) understand the types and degrees of civic engagement that the college is prepared to play in establishing community partnerships. The presenters will share the four principles that guide decisions about which proposals and requests the college considers for establishing partnership agreements as well as the five levels/types of town-gown affiliations officially sanctioned by Buffalo State.

4. Experiential Learning in BSW Education for Persons with Physical Disabilities

Brent Satterly and Rebecca Dewar: Widener University

Social work educators must consider how their teaching methodologies are inclusive of students with disabilities. This workshop will demonstrate active training that is inclusive of persons with physical disabilities in education. Case examples will be provided by a student with physical disabilities and her professor.

5. Community Based Research and the Doctoral Candidate

Amy Lee Persichetti and Patricia Lawler: Cabrini College, Widener University

The longstanding academic tradition of the doctoral dissertation provides a unique opportunity for university and community partnerships. Using the emergent model of community based research, metropolitan universities such as Widener are uniquely positioned to tie doctoral research directly to the missions of area organizations and agencies.

6. The Use of the Community Conversations Model to Facilitate Community Interactions

Brenda O'Hern: Widener University

This session will examine the community conversations model that is part of a national initiative, which can be used by university faculty, administrators, and students. The model is a vehicle for conversations in

Program Agenda

the community around the issues of educating the whole child in this age of accountability and inequity.

7. Building Community Resiliency: A Public-Private Partnership

Michelle Vasquez-Jacobus, Sherry Russell and David Scobey: University of Southern Maine, Bates College

The Downtown Education Collaborative (DEC) is an innovative community-campus collaborative which includes four colleges, both public and private, and three community partners in interdisciplinary educational programs. We will share DEC's vision of community reciprocity and collaborative leadership and the role of collaborative models in enhancing the resiliency of community and campus.

8. Through Different Lenses: Dual Perspectives on Building Community Resiliency

Irma McClaurin and Sherrie Pugh: University of Minnesota, Northside Residents Redevelopment Council

This roundtable will focus on the development of the University Northside Partnership (UNP) in North Minneapolis, and take the form of a presentation/conversation between a University of Minnesota Urban Research and Outreach/Engagement Center representative and a community partner about how to define community resiliency, and the role of both universities and communities in this process.

9. Educational Infrastructure for Nurturing Community Resiliency

Kim Bullock, Marisa Brown and Beverly Roberson Jackson: Georgetown University, DC Health Resources Partnership, Family Voices, Inc.

This discussion will illuminate community-based teaching strategies used to instruct urban medical students. Two model community partnerships will be highlighted in this discussion. These alliances exemplify the values-based education that effective community/campus partnerships yield, and demonstrate the need for further institutionalization of service-learning as a legitimate training method.

10. Reimagining the Urban Campus through Civic Engagement: A Model for Building Community Partnerships

Marcia Wilson Brown and Diane Hill: Rutgers University-Newark

This presentation addresses how Rutgers Newark has used the landscape of the city to recast the "ivory tower" image of universities and interrogates our civic engagement efforts through the lens of institutional investment, sustainability, building models, and producing outcomes. We will also touch upon strategic planning and collaborative grants/funding opportunities, challenges of staff development, and the continued conceptualization and implementation of learning organization and student leadership models.

11. Creating a Culture of Engagement: The Role of Gerontology in Intergenerational Community Health Promotion

Jessyna M. McDonald and Chonda Walden: University of the District of Columbia

This session describes how the Institute of Gerontology and the Paving Access Trails for Higher Security Program (PATHS) programs at the University of the District of Columbia developed an intergenerational collaborative model for pre-service and inservice training in community health promotion in Washington, DC.

12. Where's the Public? Connections and Collaborations among Universities and Metropolitan Publics

Marc Holzer, Alan Sadovnik, Robert W. Snyder, Jamie Lew and Mark Krasovic: Rutgers University-Newark

Our panel, a roundtable discussion among panelists and audience, explores questions arising from Rutgers-Newark's embrace of metropolitan Newark in research, teaching, and programming. What are the risks and benefits for universities working collaboratively with city government? Who represents the public? What happens when research and

public perceptions collide?

13. Cost Effective Solutions to School System Professional Development Needs Through University Collaborative Partnerships

Beverly German and Elizabeth Neville: Towson University

This session will focus on school system/university partnerships that utilize collaborative planning to cost-effectively meet the professional development needs of school system staff through graduate course offerings. A menu of graduate "packages" will be presented, ranging from custom designed courses utilizing the expertise and co-planning of university and school system personnel to traditional courses offered as single courses, four course cohorts from one department, inter-departmental four to six course cohorts, and full master's degree programs.

14. The Status of University Civic Engagement Impact Assessment

Stephen Kauffman, Marcine Pickron-Davis: Widener University

With the rapid expansion of civic engagement activities at colleges and universities across the nation has come an associated interest in determining the real effects, or impact, of such activities. Yet the overall status of such efforts is unknown, despite what is certainly effective work taking place in many places. This roundtable seeks to examine the status of such projects, with a two-fold purpose. First, the roundtable seeks to open the discussion among researchers for the purposes of networking and identifying interesting projects. Secondly, the facilitators are interested in identifying such projects of possible inclusion in an edited, peer-reviewed journal.

Concurrent Sessions IV 8:50–10:00 a.m. Washington Room A: Paper Presentations

1. Engaging Undergraduate Student in Community-Based Research

Stephen Percy and Patricia Najera: University of Wisconsin-Milwaukee

The paper explores a novel program at the University of Wisconsin-Milwaukee—a large urban research university—to engage undergraduate students in

Program Agenda

community-based research to expand their appreciation of this work in communities.

2. Courses on Community Theory and Practice: Model Assignments to Promote Civic Engagement

Stephen Kauffman, Jenny Wyatt and Marina Barnett: Widener University

This presentation describes how a community theory and practice course may be structured to promote civic engagement. The session will demonstrate how a variety of civic engagement activities have been integrated into the class. The presentation will discuss each type of activity, any problems experienced, and how to overcome them.

3. Youth, Faith, and Services: A Leadership Consortium

Ralph Fitzpatrick and Chris Locke: University of Louisville, Louisville Metro United Way

Presenters will share their experiences and strategies on building a new youth services leadership training paradigm focused on leveraging resources and increasing organization capacity. Presentation highlights will include recommendations on educational curriculum development, mentoring, program evaluation and assessment, marketing and public relations, grant writing, and training certification.

Washington Room B: Paper Presentations

1. Creating Opportunities to Promote Empowerment

Joan Tilghman and Patricia D. Setlow: Coppin State University

Many women are released from prison and return to their communities lacking accurate information about health care. The graduate nursing program of the Helene Fuld School of Nursing sponsors forums detailing health specific information for formerly incarcerated women and high risk women residing in the urban community

2. Instilling Resiliency in System Involved Youth

Lisa Hutchinson: University of Arkansas-Little Rock
Through a collaborative effort with the Department

of Human Services and the university, system involved youth are given the opportunity to participate in a mentoring program in which university students from various majors serve as mentors. During this two-semester program, mentors work with their mentees both during their incarceration, as well as while they transition back into the community.

3. Nurturing Community Resiliency by Teaching Critical Thinking Tools to Prison Inmates

Jeff Buechner: Rutgers University-Newark

We provide a mechanism, employing our innovative method for teaching critical thinking that changes prison inmates from social problems to social assets, in the form of intellectual capital.

Washington Room C: Panel Presentations

1. Community Engagement Initiatives in a Physical Therapy Program

Jill Black Lattanzi, Kerstin Palombaro and Robin Dole: Widener University

The Widener University Institute for Physical Therapy Education (IPTE) has a multi-faceted program related to community engagement. This panel will provide an overview of the IPTE program philosophy and how it connects to community engagement opportunities. Additionally, the panel will discuss the variety of community engagement opportunities for students that occur throughout the year which range from one-day events to comprehensive programming.

2. A Youth Leadership Development Approach to University-Community Collaboration

Barbara Ferman, Ieshia Nelson, Alison Huxta, and David Cruz: Temple University

This panel discusses the UCCP's (Temple University) work with high school and college students in preparing and supporting youth and young adults to become confident, effective leaders and in collaborating with organizations to create cultures that value and integrate the contributions of youth, thereby building stronger communities.

Congress Room A: Paper Presentations

1. Radical (Re) Constructions and Experimental Pedagogies: Building Schools in the Migrant Communities of Mumbai, India

Scott Gerald Shall: Temple University

In the summer of 2008, a forty-person team representing two countries, eight universities, and six disciplines traveled to Mumbai where they worked with local communities to create new educational approaches for migratory workers. Informed in part by writings of Guy DeBord, Pierre Bourdieu, and Claude Levi-Strauss, the work produced offered not a single project, but an infrastructure through which many projects might be realized over time by a myriad of publics.

2. Responding to Community Adversity in Global Perspective: The Role of University Leadership across Borders

Reginald Avery, York Bradshaw and Paul Mbatia: Coppin State University, University of Nairobi

Our proposal examines a research and community engagement project that compares urban policy related to education, health, and housing in Baltimore; Pretoria, South Africa; and Nairobi, Kenya. Three universities (one in each city) collaborate with each other to provide the major leadership role in this project, which focuses on resilient communities.

Congress Room B: Panel Presentations

1. Communiversality Reconsidered: Innovation and Diversity in University-based Service Programs

Evan Stark, Carl Milofsky, Kyle Farmby, Mahako Etta and Amanda Buberger: Rutgers University-Newark, Bucknell University, and Tulane University

Taking up a challenge issued by University of Minnesota President Malcolm Moos in 1967, this panel addresses what it means for the university to "go to the community instead of insisting that

Program Agenda

community come to it." Panelists will assess how the concept of university service has changed over the last four decades, what obstacles remain to involving scholars in "directed change" in America's metropolitan areas, what opportunities exist to re-engage the "communiversality" vision, and best practice examples of the how public service can contribute to community resiliency.

2. Youngstown 2010: The Story of Campus/Community Development

David C. Sweet, Mayor Jay Williams and Hunter Morrison: Youngstown State University, City of Youngstown

Managing the complex relationship between universities and the cities that they call home is one of the biggest challenges facing university administrators. This session will discuss the lessons from executing the Youngstown 2010 community development process. Participants will hear from three of its principal architects.

Congress Room C: Paper Presentations

1. Curricular and Co-Curricular Reform to Advance Civic Engagement

Frank E. Ross, Scott Evenbeck and Jill Wright: Indiana University-Purdue University Indianapolis

Presenters will share details of curricular transformation coupled with an innovative co-curriculum to advance civic engagement for students at a large, urban university. Using the *USA Today's* Collegiate Readership Program as our foundation, these faculty members engaged students in learning about social issues impacting the local community.

2. Green, Wireless and Moving: A Neighborhood Management System

Ralph Fitzpatrick and Michael Brooks: University of Louisville, California Neighborhood Coalition

Presenters will highlight the work of a community based collaborative that is asset-driven, valuing the unique gifts of its membership and encouraging civic participation. Presenters will highlight action steps taken to position the target area community to become "green, wireless and moving to an arts beat!"

3. A Comparative Analysis of Service-Learning Programs: The Connection between Experiential Education and Community Resiliency

Lori Simons, Larry Fehr, and Nancy Blank: Widener University

This presentation will describe how service-learning, practicum, and internship courses serve as a strengths-based approach for fostering community resiliency; review data on community recipients' perceptions of experiential learning; and discuss the successes and challenges of teaching experiential learning courses. Students will share their reflections about participating in experiential learning courses.

10:00–10:30 a.m.

Regency Ballroom, Second Floor Break

Concurrent Sessions V 10:30–11:40 a.m.

Washington Room A: Paper Presentations

1. Urban Survival: A Community-Based Model to Promote Nutritional and Environmental Security

Britney Chase and Mintesinot Jiru: Coppin State University

Urban survival project promotes community-based gardening to avoid fast food options that cause different kinds of disease. The project consists of nutrition evaluation, preservation of food, and cultivation of land. Community gardens sites are selected at Coppin University's neighborhood to cultivate different kinds of crops using appropriate water and crop management technologies. It is expected that urban survival model helps us understand urban university's role in transforming the livelihoods of neighborhood communities.

2. Good Launching: New PsyD Students Learn About Community Life Through Film and Narrative

Virginia Brabender and Woodwyn Koons: Widener University

This presentation discusses the use of a film providing the narrative history of a community as a means of orienting Psy.D. students to their community and fostering a discussion about community engagement.

3. Improving Access to Care Through Community Partnerships

Joan Tilghman, Patricia Setlow and Marcella Copes: Coppin State University

The Helene Fuld School of Nursing School-based Health Center is designed to meet needs of urban residents. The clinic is surrounded by multiple underserved communities. The clinic mission is to deliver culturally sensitive health care with an emphasis on primary health care, patient education, health promotion, rehabilitation, and self care.

Washington Room Room B: Panel Presentations

1. The Civic Sphere and Community Resiliency in the Brick City: Newark Comes of Age

Clement Alexander Price, Christina Collins, Mark Krasovic and Reniqua Allen: Rutgers University-Newark, Harvard University

The Rutgers Institute on Ethnicity, Culture, and the Modern Experience helps energize Newark's civic culture through scholarly public programming. This panel will discuss the institute's efforts to commemorate Newark's "riots," as well as its efforts to recognize and continue the work of those dedicated ever since to assuring Newark's resiliency.

2. Building Institutional Capacity Through Individualized Leadership Development

Sharon A. McDade and Andrea Warren Hamos: American Council on Education

The ability of universities to help communities respond to adversity and risk requires institutional leadership prepared to assume that challenge. The nation's premier leadership development program provides an integrated learning approach for rising administrators that helps CUMU members build their institutional leadership capacities, especially regarding community engagement.

Program Agenda

Washington Room C: Panel Presentations

1. University Green: Improving Town-Gown Relationships Through Greening

Mindy Maslin, Barley Van Clief and Sue Pringle: Pennsylvania Horticultural Society, UC Green

The University Green program promotes successful university/community collaborations through tree planting. Learn how to start your own University Green program and create: stronger “town/gown” relationships; meaningful service-learning opportunities for students; and safer, healthier and more resilient communities and campuses for all.

2. University as Catalyst for Community Development

Frank Russell: University of Cincinnati

The University of Cincinnati has experienced diverse relationships with the surrounding communities as a result of both circumstance and intention. In the last decade, on the heels of an ambitious campus master plan, UC is seeking to remake its surrounding communities as viable live-work neighborhoods that complement the vision of the University administration to create a world class campus and learning environment.

Congress Room A: Paper Presentations

1. Common Goals Enhance Resiliency

Barbara Edington and Sandra Westcott: St. Francis College

The mentored internship course, offered at St. Francis College, combined structured skill-based classroom learning with on-site work experience. Businesses benefited from the technical expertise of the students, the students garnered valuable experience, and the college became an integral part of the community by facilitating the attainment of common goals.

2. Aligning for Success: Preparing High School Graduates for College and Careers

Nevin C. Brown: Achieve, Inc.

Postsecondary institutions need to be deeply engaged in initiatives to align high school graduation with college-ready expectations. The presenter

will discuss Achieve’s American Diploma Project (ADP) and the important role of urban and metropolitan universities in helping to prepare high school graduates for success in postsecondary education and beyond.

Congress Room B: Paper Presentations

1. Building Disaster Resilient Communities: The Role of an Engaged University

Robin Ersing and Manny Rivero: University of South Florida

Hurricane Katrina established a marker to measure all future responses to community disasters. This presentation demonstrates the important role of university-community engagement as a mitigation strategy for neighborhoods impacted by a natural disaster. We discuss a grassroots initiative that offers strengths-based tools to help organize and build disaster resilient communities.

2. Saturday Ecology Academy: Connecting Girls and Pre-Service Teachers to the Urban Environment

Nadine McHenry, Erika Scarborough, Suzanne Barrett and Bernard Carrozza: Widener University, John Heinz National Wildlife Refuge

The Saturday Ecology Academy represents an innovative collaboration between Widener University and John Heinz National Wildlife Refuge. Faculty, refuge staff, and pre-service teachers provide learning experiences for the girls to explore the beauty and adversity in their urban environment while investigating their personal strengths as means to help their communities.

Congress Room C: Paper Presentations

1. Comparing the Spatial Distribution of Community Assets with the Socioeconomic Condition of Residents in Chester, PA Using Advanced Geographic Information Systems Analysis

Brittany Sanders and Corey Gemerek: Widener University

The project goal is to compare the spatial distribution of the socioeconomic condition of residents within Chester, PA with available community resources. By

analyzing maps, exact resources that are unavailable to residents and the characterization of asset poor “islands” can be identified. These are now target areas for economic development.

2. Consuming Well for the Wealth of Communities from the University to the World

Frank E. Ross and Gayle Williams: Indiana University-Purdue University Indianapolis

Presenters will share details of an urban university engaging the campus and community with a common theme: “consuming well for the wealth of communities.” Our three foci allow faculty, staff, and students to engage in meaningful dialogue with community members regarding healthy communities, green economy, and just sustainability.

12:00–1:30 p.m.

Regency Ballroom, Second Floor

Lunch and Keynote Address

University Partnerships Town Hall

Sherone E. Ivey: Office of University Partnerships, U.S. Department of Housing and Urban Development

Deputy Assistant Secretary Ivey will talk about the initiatives of HUD’s Office of University Partnerships under the Obama Administration and will lead a town hall format discussion on best practices in university partnerships.

1:30 p.m.

Hotel Lobby

Philadelphia Mural Arts Program

Walking Tour

Conference Information

Cyber Café

Dell is pleased to sponsor the Cyber Café, providing easy access to the internet. The Café is located in Parlor 2 on the second floor of the hotel. It will open from 7 a.m. to 7 p.m. Monday and from 7 a.m. to 12 p.m. Tuesday.

Exhibits

Exhibit displays are located in the Regency Ballroom on the second floor mezzanine across from registration. The exhibit hall is open from 5 p.m. to 7 p.m. on Sunday, 8 a.m. to 5 p.m. on Monday, and 8 a.m. to 12 p.m. on Tuesday.

Conference Planning Committee

James T. Harris III, Chair

President
Widener University

Jo Allen

Senior Vice President and Provost
Widener University

Mary Brydon-Miller

Director, Action Research Center
University of Cincinnati

Lou Anne Bulik

Assistant Vice President, University
Relations
Widener University

Linda Durant

Senior Vice President, University
Advancement
Widener University

Dan Hanson

Director of Public Relations
Widener University

J. Matthew Hartley

Associate Professor, Higher Education
University of Pennsylvania

Michael Ledoux

Associate Dean, School of Human
Service Professions
Widener University

Ellen Madison

Administrative Assistant, Office of
Community Engagement and
Diversity Initiatives
Widener University

Transportation to Events

Bus service from the hotel to all events (Tour of Widener and Chester, Franklin Institute Reception, Philadelphia Speakers Series, Tour of Philadelphia) will be available from the Loews Philadelphia Hotel. More information will be provided at the conference.

Concierge Service

A representative from the Loews Philadelphia Hotel will be available from for the duration of the conference to offer assistance with restaurant and attractions recommendations.

Colleen McCourt

Special Events Coordinator
Widener University

Jean McGee

Coordinator of Continuous Learning
University College
Widener University

Bobbie O’Connell

Coalitions Administrator, CUMU
Manager of External Affairs, Economic
and Community Outreach
Towson University

Marcine Pickron-Davis

Assistant to the President for
Community Engagement and
Diversity Initiatives
Widener University

Emily Richardson

Dean of University College
Widener University

Anita Thomas

Vice President of Government and
Community Relations
University of Baltimore

Stephen Wilhite

Associate Provost and Dean of the
School of Human Service
Professions
Widener University

About Philadelphia



Philadelphia is the birthplace of our democracy; it’s also cheesesteaks, Tastykakes, the Mummers, and home of the World Champion Philadelphia Phillies, but Philadelphia is so much more.

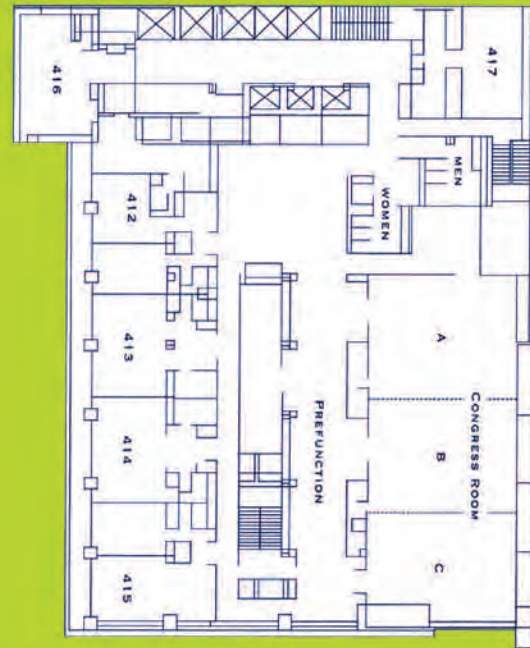
The City of Brotherly Love is home to the Philadelphia Museum of Art, one of the largest museums in the United States, but did you know that Philadelphia is also the largest outdoor art gallery in the world? The Philadelphia Mural Arts Program boasts more than 3,000 murals spread throughout the city.

From the fine arts to the performing arts, the Avenue of the Arts in Center City is home to more than a dozen theaters including the Kimmel Center for the Performing Arts, residence of the Philadelphia Orchestra and the Philadelphia Speakers Series hosted by Widener University.

If it’s history you crave, there is always the Liberty Bell and Independence Hall, but don’t miss the unique, interactive experience of the National Constitution Center, the Independence Visitor Center, and the Franklin Institute Science Museum.

All of this just scratches the surface of what Philadelphia has to offer. The longer you stay, the more you can experience.

Hotel Floor Plan



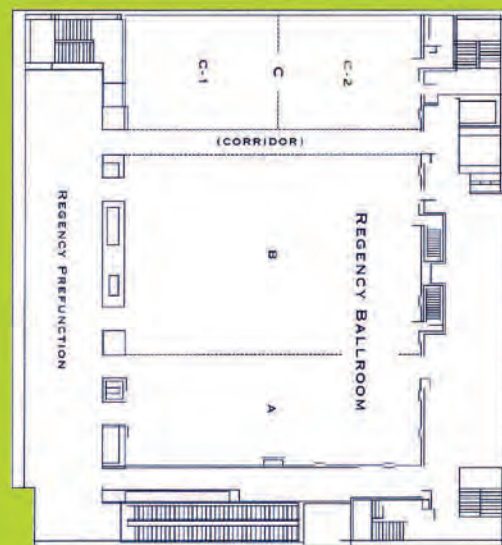
Fourth Floor



Third Floor



Thirty-Third Floor



Second Floor Mezzanine

Speaker Index

Darcy Accardi15	Marcella Copes19	Charlene Gray14	Brenda Marsteller Kowaleski10
Kallika Agarwal11	Jean-Michel Cousteau4, 12, 16	Andrea Warren Hamos19	Mark Krasovic17, 19
Reniqua Allen19	Kimberly Crabtree11	Ira Harkavy3, 9	Jill Black Lattanzi18
Annette Anderson11	Henry Cunningham13	James T. Harris III3, 9	Patricia Lawler16
Uzo Anucha14	Kate Dantsin14	Ann Weaver Hart3, 9	Michael Ledoux11
Ryan Assadi10	Rachelle Darabi12, 20	Daniel Hart16	Sue Levesque14
Robert Atkins16	Michael Del Giudice9	Helene Harte10	Jamie Lew17
William Austin10	Amy Sue DeSonia13	Amanda Hartnett13	Starr Lewis13
Reginald Avery14, 18	Marian Deutschman16	Denise Hearn13	Brandi List11
Joe Baker15	Donita Devance15	James Heffernan14	Judith Liu14
Marina Barnett13, 16, 18	Don Devilbiss16	Diane Hill17	Chris Locke18
Suzanne Barrett20	Rebecca Dewar16	Jan Hillard11	John Loggins14
Glenn Beamer13	Steven Diner3, 9, 10, 11	Dennis H. Holtschneider3, 9	Raymond Lorion10
Joel Beutel10	Evan Dobbelle9	Marc Holzer15, 17	Helga Luest11
Nancy Blank19	Robin Dole18	Brenna Hughes14	Linda Mannering9
Virginia Brabender19	Marsha Dowell15	Ed Hurley14	Elisa Martin12
York Bradshaw18	Barbara Edington20	Lisa Hutchinson18	Gilda Martinez12
Carol Brand15	Sarah Elfreth10	Alison Huxta18	Mindy Maslin20
Michael Brooks19	Ed Elmendorf14	Travis Ingersoll10, 12	Ruta Mazelis11
Doug Brown10	Laurie Emery13	Sherone E. Ivey4, 20	Paul Mbatia18
Marcia Wilson Brown17	Robin Ersing20	Beverly Roberson Jackson17	Belinda McCarthy12
Marisa Brown17	Mahako Etta18	K. Jeanette Jacques10	Bernard McCarthy12, 20
Nevin Brown20	Scott Evenbeck19	Luke Jankovic9	Irma McClaurin17
Amanda Buberger18	Kyle Farmby18	Annemarie Jay13	Lisa McCord13
S. Ted Bucaro15	Larry Fehr19	Mintesinot Jiru19	Cecilia McCormick15
Jeff Buechner18	Dick Ferguson10	Linda Johnston15	Megan McCormick11
Kim Bullock17	Barbara Ferman18	L. Jeff Jones10	Sharon McDade19
Steve Bullock9	Mary Fisher15, 16	Jane Jue12	Jessyna McDonald17
Stephanie Bush-Baskette15	Ralph Fitzpatrick18, 19	Alice Kaiser-Drobney13	Nadine McHenry20
Dianne Butera15	Sarah Flanagan14	Stephen Kauffman14, 17, 18	Bruce McKee10
Robert Caret10	Chad Freed16	Courtney Kelly11	Susan McNiff11
Bernard Carrozza20	Corey Gemerek20	Melissa Miller Kincart10	Reuben Miller13
Britney Chase19	Beverly German17	Judith Kirchoff15	Carol Milofsky18
Nancy Chavez13	Jaesook Gilbert10	Nice Kline11	Zachary Mitchell11
Kimberly Cole10	Warren Gleckel16	Michael Konig9	Kenneth Morgan14
Christina Collins19	Jane Golden4, 16	Woodwyn Koons19	Hunter Morrison19
Ronald Copeland9	Nicole Grandmont-Gariboldi12	Dana Korin13	Pat Mullen12

Patricia Najera.....18	Loretta Pyles.....12	Patricia Setlow.....18, 19	Nick Tobier.....12
Ishia Nelson.....18	Jennifer Quigley.....14	Scott Gerald Shall.....18	James Turner.....13
Elizabeth Neville.....17	Chad Ripberger.....16	Hadass Sheffer.....16	Lucy Tuton.....15
Michael A. Nutter.....3, 9	Joseph Ritchie.....10	Robert Shick.....15	Barley Van Clief.....20
Mary O'Connor.....11	Joel Ritsema.....13	Hal Shorey.....14	Michelle Vasquez-Jacobus.....17
dt ogilvie.....10	Manny Rivero.....20	Douglas Shultz.....13	Chonda Walden.....17
Brenda O'Hern.....17	Albert Robinson.....14	Lori Simons.....19	Sandra Westcott.....20
Eileen O'Keefe.....11	Jeffrey Robinson.....10	Richard Sinatra.....12	Sue Wilkinson.....14
Kathryn Orme.....11	Frank Ross.....19, 20	David Sink.....9	Gayle Williams.....20
Randolph Ortiz.....12	Frank Russell.....20	Robert Snyder.....17	Jay Williams.....19
Kerstin Palombaro.....18	Sherry Russell.....17	Evan Stark.....18	Mark Winston.....14
Darrell Parker.....15	Valerie Rutledge.....15	Debra Stein.....12	Heather Witt.....10, 12
Rick Perales.....15	Cheryl Sadeghee.....12	John Stockwell.....15	Sara Woods.....14
Stephen Percy.....18	Alan Sadovnik.....17	Uday Sukhatme.....16	Glenda Wrenn.....12
Amy Lee Persichetti.....16	Brittany Sanders.....20	Kristoffer Surdukowski.....11	Jill Wright.....19
Marcine Pickron-Davis.....17	Paul Sather.....14	Colin Sutton.....12	Jenny Wyatt.....12, 15, 18
John Poulin.....12	Brent Satterly.....16	Melanie Swain.....10, 12	Shan Xu.....10, 12
Clement Alexander Price.....19	Erika Scarborough.....20	David Sweet.....19	Catherine Zalewski.....11
Sue Pringle.....20	Nicole Schaefer.....14	Anita Thomas.....14	Nancy Zimpher.....11
Stefan Pryor.....10	Nicole Schiraldi.....10	Lorraine Thomas.....12	
Sherrie Pugh.....17	David Scobey.....17	Joan Tilghman.....18, 19	



Save the date for
next year's conference:

**Aligning the Metropolitan University
with Business, Government
and the Non-Profit Sector**

16th Annual Conference
October 24-26, 2010
Hosted by
California State University, Fresno



**Widener University welcomes CUMU to the Delaware Valley,
including the cities of Philadelphia and Chester.**

www.widener.edu



